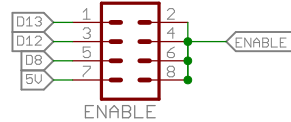




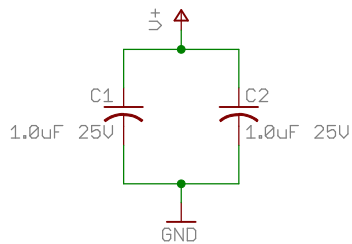
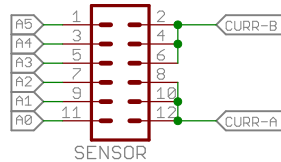
Motor Control for Arduino

7V-28V, 12A Continuous - 40A Peak

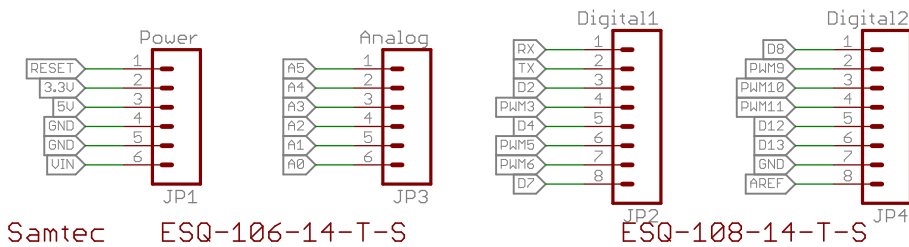
Enable Select



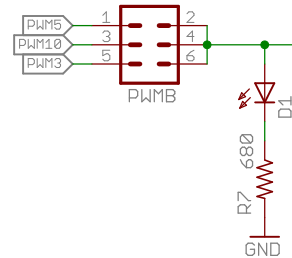
Current Feedback Select



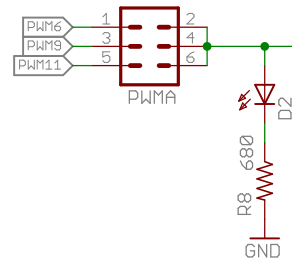
Arduino Headers



PWM B Source

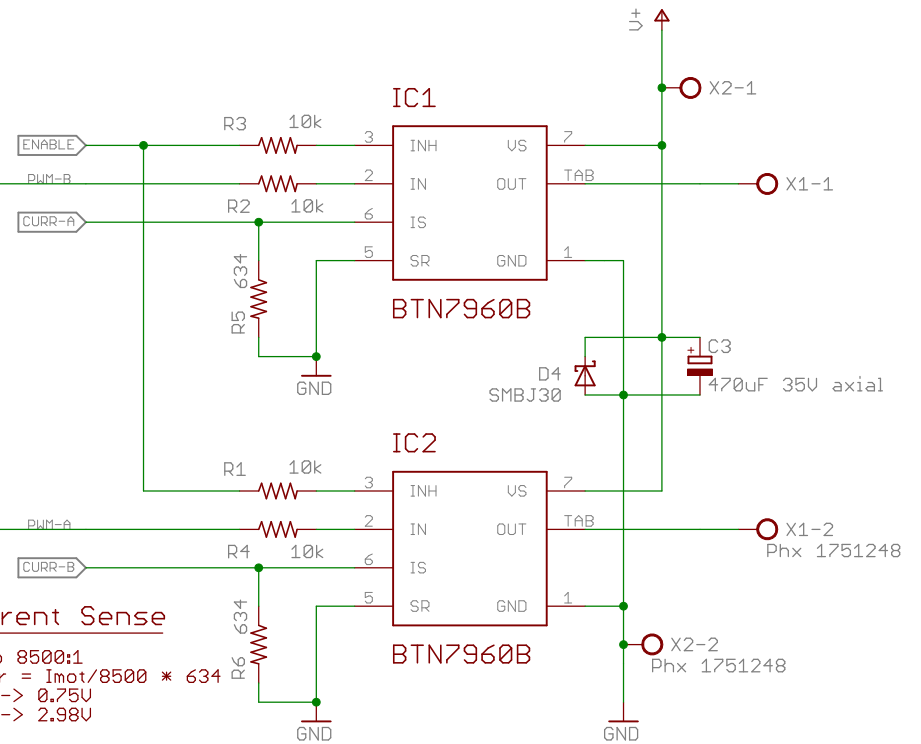


PWM A Source



Current Sense

Ratio 8500:1
 $V_{curr} = I_{mot}/8500 * 634$
 10A -> 0.75V
 40A -> 2.98V



Copyright 2010 by Robot Power
 Released under the Creative Commons
 Non-Commercial, Attribution, Share-Alike Licence

MegaMoto Shield v1.0

TITLE: MegaMotoShield-v01

Document Number:

REV:

Date: 11/1/2010 3:22:31 PM

Sheet: 1/1